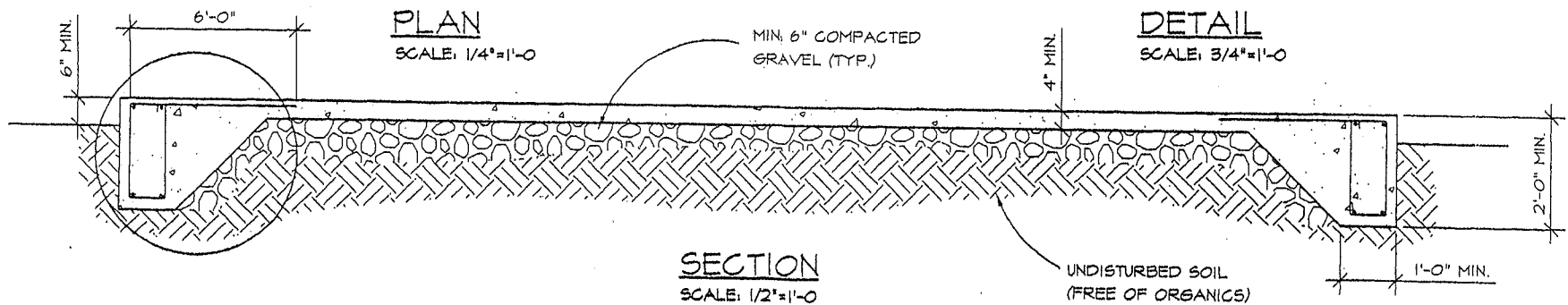
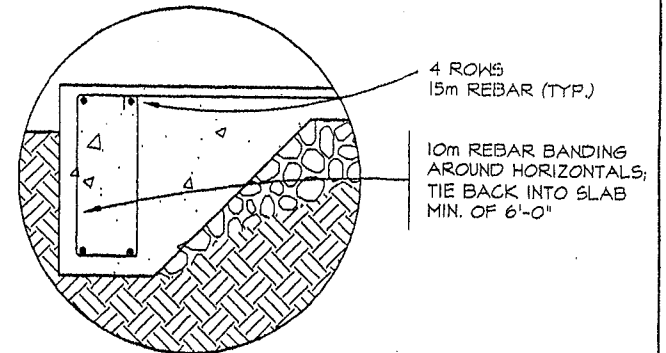
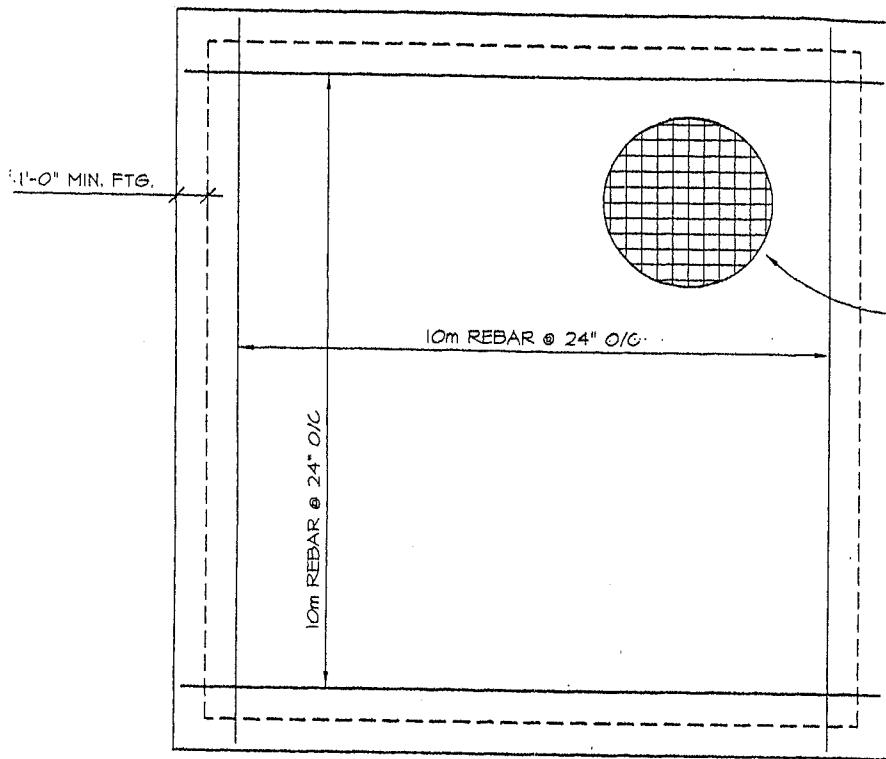


RECOMMENDED STRUCTURAL SLAB CONSTRUCTION

NOTE:

1. MAX. SIZE OF STRUCTURAL SLAB TO BE 592 SQUARE FEET, UNLESS DESIGNED BY A STRUCTURAL ENGINEER
2. STRUCTURAL SLAB TO SUPPORT ONE STOREY ONLY

OPTION:
6x6x10 WELDED WIRE MESH
THROUGH SLAB IN PLACE
OF REINFORCING STEEL



PLAN

SCALE: 1/4"=1'-0"

DETAIL

SCALE: 3/4"=1'-0"

SECTION

SCALE: 1/2"=1'-0"

REGIONAL DISTRICT OF FRASER-FORT GEORGE